
AI-Powered API Modernization

Revolutionizing Apigee to MuleSoft Proxy Migrations through
Intelligent Automation Agents

AI Tech IT Solutions

The Migration Challenges

Overcoming the manual bottleneck in integration migrations.

Barriers to Legacy Modernization

Technical Debt Risk

Manual translation of Apigee's Nginx-centric architecture into Mule's Java runtime is prone to human error and logic gaps.

Migration timelines often stretch into months, delaying critical digital initiatives.

Talent Scarcity

Rarely do engineers possess deep architectural mastery of both platforms simultaneously.

Cost per proxy migration increases exponentially as complexity grows across large portfolios.

The Solution: Agentic AI

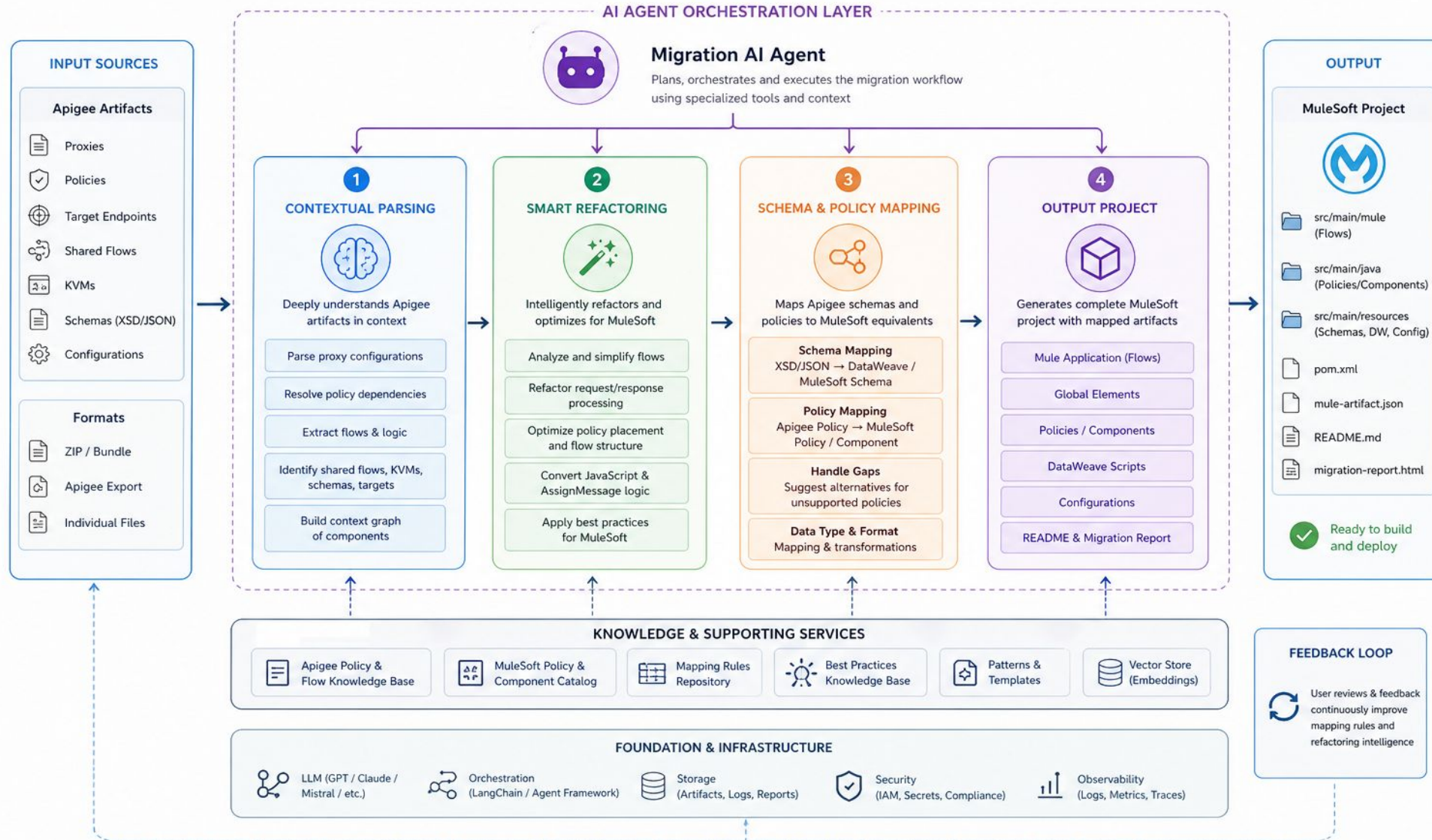
Our migration agent leverages Large Language Models (LLMs) specialized in integration patterns to automate the entire lifecycle.

- **Contextual Parsing:** Reads Apigee XML bundles and extracts functional intent.
- **Smart Refactoring:** Does not just copy—it optimizes for MuleSoft best practices.
- **Schema Mapping:** Automates complex DataWeave transformations in seconds.

High level Architecture

AI Agent for Migrating Apigee Proxies and Policies to MuleSoft

End-to-end intelligent migration with contextual understanding and smart transformation



Core Capability Framework



Automated Mapping

Maps legacy security, traffic management, and mediation policies to native Mule counterparts with 99% accuracy.



DataWeave Gen

Generates complex transformation scripts that handle XML, JSON, and custom payload types seamlessly.



Compliance Scan

Ensures that every migrated proxy meets enterprise security and governance standards automatically.

Seamless 4-Step Workflow

Ingestion

Agent ingests Apigee proxy bundles and policy configurations.

Refactor

Generation of Mule XML, POM files, and DataWeave scripts.

Analysis

AI identifies dependencies, variables, and cross-flow logic.

Validation

Automated deployment and behavior-driven testing cycles.

Policy Transformation Matrix

Apigee Source	Agent Action	MuleSoft Target
Spike Arrest / Quota	Traffic Analysis	Rate Limiting SLA Policy
ExtractVariables (URI)	Uri-Param Context	Attributes Selector
JavaScript / JavaCallout	Logic Refactor	DataWeave / Custom Connector
VerifyAPIKey	Security Mapping	Client ID Enforcement

Efficiency Gains: Time Savings

Traditional Manual

80 hrs per proxy

Tool assisted

50 hrs per proxy

AI Agent (Ours)

8 hrs per proxy

**The actual effort depends on proxy

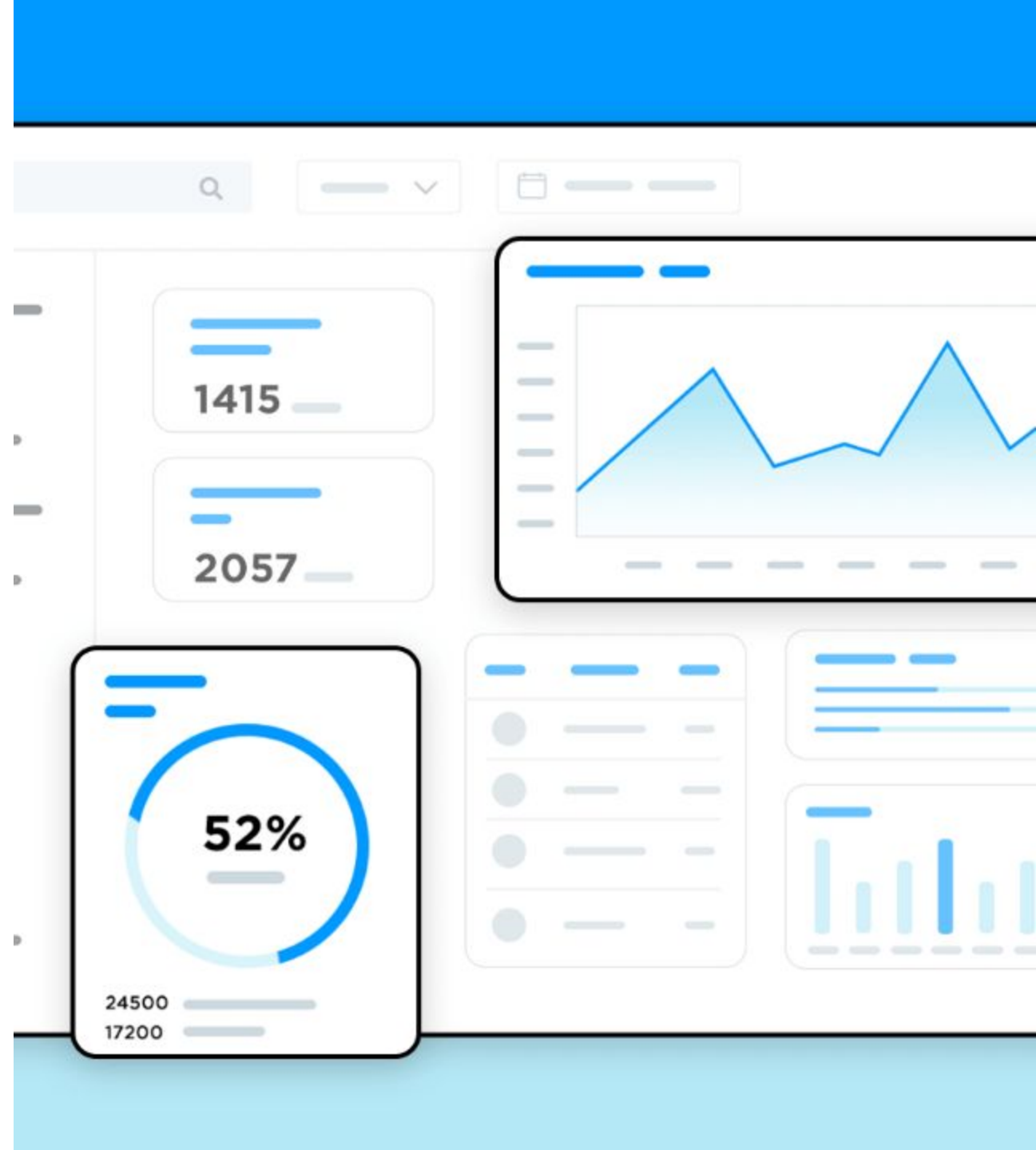
AI agents deliver a 10x reduction in delivery time for standard proxy patterns.

The Intelligence Layer

Beyond Code Search

The agent understands the "intent" behind proxy logic. If an Apigee proxy uses a complex JS script for error handling, the agent refactors it into a native Mule Error Handler block.

This ensures the resulting code is maintainable, performant, and native to the Anypoint Platform ecosystem.



Measurable Business Impact

85%

OPEX REDUCTION

Scaling the Migration

By automating the repetitive 80% of migration tasks, your elite engineering team can focus on the 20% of high-complexity integration logic that requires human architectural decision-making.

Modernize Your Strategy

Don't just migrate elevate your API landscape with AI.

Let's Talk

How can our AI agent accelerate your MuleSoft journey?

AI Tech IT Solutions